

August 2022

Business Updates

[Update to our Caring for Kaiser Permanente members from other regions provider manual page](#)

We have had several inquiries from our contracted providers regarding claims processing when caring for Kaiser Permanente members from other regions. We have updated this page to include the following information to clarify when to bill the home vs. the host region plan:



Claims Processing: If a Kaiser Permanente member has a Kaiser Permanente of Washington (KPWA) health plan authorization for services provided, please bill claims to Kaiser Permanente of Washington (KPWA) Claims Administration for processing.**

**Please note: The following services are exceptions to the above, and must be billed to the Home plan:

- Infertility services
- Services related to artificial conception
- Gender confirming surgery and related services, other than services determined to be provided by all regions
- Services related to bariatric surgery and treatment
- Organ and blood/marrow transplants and related care
- Orthotics and prosthetics
- Durable Medical Equipment (DME)
- Chronic dialysis

If you have any questions when treating a Kaiser Permanente member from another region, please contact the Visiting Member Unit toll-free at 1-800-446-4296 or 509-241-7798 for assistance. For prior-authorization questions, contact Review Services at 1-800-289-1363.



Reminder to Update and Certify Provider Information in the Centers for Medicare & Medicaid Services' National Plan & Provider Enumeration System

As you are aware, CMS requires health plans to work with their contracted health care providers to review, update, and certify existing provider information in National Plan & Provider Enumeration System (NPPES). Updating provider information in NPPES will provide organizations with access to a current database that can be used as a resource to improve provider directory reliability and accuracy.

Please review your National Provider Identifier (NPI) data in NPPES as soon as possible to ensure that accurate provider data is displayed. When reviewing your provider data in NPPES, please update any

August 2022

inaccurate information in modifiable fields including provider name, mailing address, telephone and fax numbers, and specialty. You should also include all addresses where you practice and *actively* see patients and where a patient can call and make an appointment. Do not include addresses where you *could* see a patient, but do not actively practice. Please remove any practice locations that are no longer in use. Once you update your information, you will need to confirm it is accurate by certifying it in NPPES. NPPES has no bearing on billing Medicare Fee-For-Service.

If you have any questions, please call the Provider Assistance Unit at 1-888-767-4670 or visit the [NPPES Help](#) page for assistance.

Kaiser Permanente Washington Health Research Institute News

We are pleased to share some of the latest news from the [Kaiser Permanente Washington Health Research Institute](#). We invite you to visit their informative website to learn more about their latest research and studies.

[Updated results from COVID-19 vaccine booster trial: IDCRC study finds rapid decline in vaccine-boostered neutralizing antibodies against Omicron variant BA.5](#)

Although COVID-19 booster vaccinations in adults elicit high levels of neutralizing antibodies against the Omicron variant of SARS-CoV-2, antibody levels decrease substantially within 3 months, according to new clinical trial data. The findings, published in [Cell Reports Medicine](#), are from an ongoing study led by the Infectious Diseases Clinical Research Consortium (IDCRC) of the National Institute of Allergy and Infectious Diseases (NIAID), part of the National Institutes of Health.



[Dementia risk screening tool shows promise in health care setting](#)



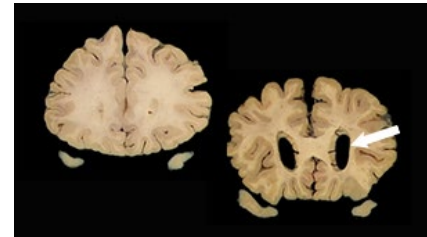
More older adults with undiagnosed dementia can potentially be identified through a screening tool called eRADAR, a new study finds. eRADAR — short for EHR (electronic health record) Risk of Alzheimer’s and Dementia Assessment Rule — is a tool developed using data from a prior research study of dementia, to help clinicians decide which patients might benefit from additional screening.

August 2022

[New open data to help understand Alzheimer's Disease](#)

Cell by cell, scientists are building a high-resolution map of brain changes in Alzheimer's disease using data from the Adult Changes in Thought (ACT) Study at KPWHRI.

Alzheimer's disease wreaks unmistakable havoc in the brain. If you compare the brain of someone who has died from this neurodegenerative disease to that of a healthy person, you can't miss the difference: In the case of severe Alzheimer's, the brain will be noticeably smaller, with large gaps where pieces would normally nestle close together. This shrinkage, termed [brain atrophy](#), is due to the die-off of neurons and their connections across the entire cortex, the wrinkled, outermost shell of the brain. Nobody knows what triggers these huge brain changes in Alzheimer's disease, let alone how to stop or reverse them.



Provider Notices



Please check our provider site on a regular basis for provider manual changes and updates. We communicate changes to the [provider manual](#) in the [Provider eNews](#) and in our [Provider Updates](#) for your convenience. However, it is your responsibility to remain updated on our changes by visiting our site regularly for updates on our policies and procedures. Thank you for your partnership in the care of our members.

Provider Notices:

- [Changes to medical necessity review criteria for home pulse oximetry](#)
- [Changes to medical necessity review criteria for lumbar spine fusion](#)
- [Changes to the code check tool for phototherapy](#)
- [Changes to medical necessity review criteria for minimally invasive lumbar decompression \(mild\)](#)
- [Changes to medical necessity review criteria for percutaneous vertebral augmentation of vertebral compression fractures](#)
- [Changes to medical necessity review criteria for total knee arthroplasty](#)
- [Revenue code billed without required procedure code](#)
- [Site of care prior authorization requirement for oncology medications](#)
- [Changes to medical necessity review criteria for genetic testing](#)
- [Changes to medical necessity review criteria for high-end imaging site of care](#)
- [Changes to medical necessity review criteria for continuous glucose monitors](#)

Provider E-News

Provider Services Department



August 2022

CME and Workshop Opportunities

Continuing Education Opportunities

Kaiser Permanente Washington offers a variety of continuing medical education courses throughout the year, detailed on our [CME Catalog page](#). Check out current opportunities below.



September 9, 2022	Cardiology for Primary Care
September 20, 2022	Obesity Through the Lens of Evidence-based Medicine
October 13, 2022	Mental Health for Primary Care
November 4, 2022	Hematology - Oncology for Primary Care
December 1, 2022	Geriatrics for Primary Care

Please remember to advise your Provider Servicesultant

Have you made any recent changes to your practice?



Don't forget to let us know so we can update our [provider directory](#). On our [provider site](#) home page, click on Provider Support, and choose Provider Demographic and/or Practice Changes to take you to our [Provider Update Forms](#) page. You will find several helpful links on that page to provide us with information.

On this page, you will be able to:

- Add new practitioners or term practitioners, including advanced registered nurse practitioners, physician assistants, and locum tenens
- Submit staff changes: in case we must adjust our records of clinic staff with Kaiser Permanente Electronic Medical Record (EMR) access.
- Submit demographic and business updates, including:
 - Clinic/services location updates
 - Close a clinic location
 - Remit/billing "Pay to" address updates
 - Tax ID update / Tax ID address update / 1099 address update

Thank you for helping us maintain a compliant and accurate provider directory.