

# Provider Update

News for Kaiser Permanente Washington Contracted Providers • SEPTEMBER 2022

## Advanced Care at Home: Bringing acute care home in October

**A NEW PROGRAM WILL BE AVAILABLE** starting in October 2022 that offers our members hospital level of care in the comfort of their home. Kaiser Permanente’s Advanced Care at Home (ACAH) program pilot will go live this October, providing personalized, patient-centered acute and restorative care for patients in their homes instead of the hospital.

The pilot program will include employees of the City of Seattle, King County and Spokane County who live within those counties and will be implemented from October 2022 through December 2022. The program will expand to include most of Washington state and all Kaiser Permanente Washington members starting in January 2023.

Eligible patients will be identified in emergency rooms and urgent care facilities when hospital admission is needed. The ACAH command center hospitalist and nursing team will screen emergency department and urgent care members via a clinical and social stability

tool to determine eligibility for the program. Members will be able to choose whether to participate in the program or not. Once safety, eligibility, and the member’s consent have been confirmed, the ACAH command center team will coordinate the admission and transportation of the patient to their home for continued acute care.

Potential patients for the ACAH program may include patients with infections requiring IV antibiotics, IV diuresis, IV steroids and other therapies that require hospital level of care and close monitoring. ACAH patients are frequently monitored in the home via telehealth technology and have in-home visits from nursing and nurse practitioner staff.

*continued on page 3*



### Contents

#### **BUSINESS OFFICE NEWS 2**

#### **PROVIDER NEWS 2**

[Take our Practitioner Satisfaction Survey](#)

[Readers agree: Olympia Medical Center is tops](#)

[Recent letters to providers](#)

#### **CLINICAL NEWS 5**

[Sexually Transmitted Infection Guideline updated](#)

Articles of interest:  
[Kaiser Permanente Washington Health Research Institute](#)

#### **PHARMACY NEWS 6**

[Kaiser Permanente 2022 drug formularies](#)

#### **CONTINUING MEDICAL EDUCATION 7**

**Provider Update** is published quarterly for Kaiser Permanente contracted providers. Send story ideas and comments to [Provider Communications](#).

Coverage provided by Kaiser Foundation Health Plan of Washington or Kaiser Foundation Health Plan of Washington Options, Inc., referred to as Kaiser Permanente in this publication.

## 2022 Calendar



### EFT deposit and check mail dates

Provider reimbursement checks are scheduled to be deposited ACH or mailed on the following dates. Mailed checks should arrive within approximately three business days.

<b>SEPTEMBER</b>	1, 8, 15, 22, 29	<b>NOVEMBER</b>	7, 10, 17, 25
<b>OCTOBER</b>	6, 13, 20, 27	<b>DECEMBER</b>	1, 7, 15, 22, 30

### Kaiser Permanente holidays

**LABOR DAY**  
Monday, September 5

**THANKSGIVING DAY**  
Thursday, November 24

**CHRISTMAS DAY**  
Monday, December 26

## PROVIDER NEWS

### Take our Practitioner Satisfaction Survey

Each year, we ask our providers to participate in our [practitioner survey](#) so we can hear your feedback on our referral and claims processes. This year, we are taking a different approach – we have created an entirely new, simple survey that covers most of our interactions with you. The survey takes only five minutes to complete and has ample space for you to share your comments with us. We hope you will take the time to provide us with feedback that will help us meet your needs. The survey will be linked on our provider site home page and available from September 15th – October 15th. Thank you for your participation in this important survey!



## Readers agree: Olympia Medical Center is tops

**MORE THAN 86,000** votes were cast by readers of The Olympian for the [2022 Best of South Sound](#). Readers chose their South Sound favorites in multiple categories including health and wellness. Olympia Medical Center earned bronze in both best hospital and best urgent care or walk-in facility categories.



Olympia Medical Center’s welcoming culture has been present in the community since the 1970s. Quite a few Kaiser Permanente members have been patients for many years. From employees personally showing patients where to go or escorting them from one health care professional to another – the warmth and care is clear, time and time again.

### Best hospital

While Olympia Medical Center isn’t an inpatient hospital, South Sound Magazine readers still value the many outpatient specialties available. From allergy to eye care, dermatology to sports medicine, and cardiology to cancer care – the vast array of health care needs is all coordinated in one location.

*continued on page 3*

*continued from page 1*

## Advanced Care at Home

These patients are able to receive home blood draws for labs, x-rays at home, IV medications and antibiotics at home, as well as clinical video visits by physicians and nurses in the comfort of their home. Safety is of utmost importance during the program.

If you have a patient that may be eligible for the ACAH program or if you have questions about the program, please reach out to:

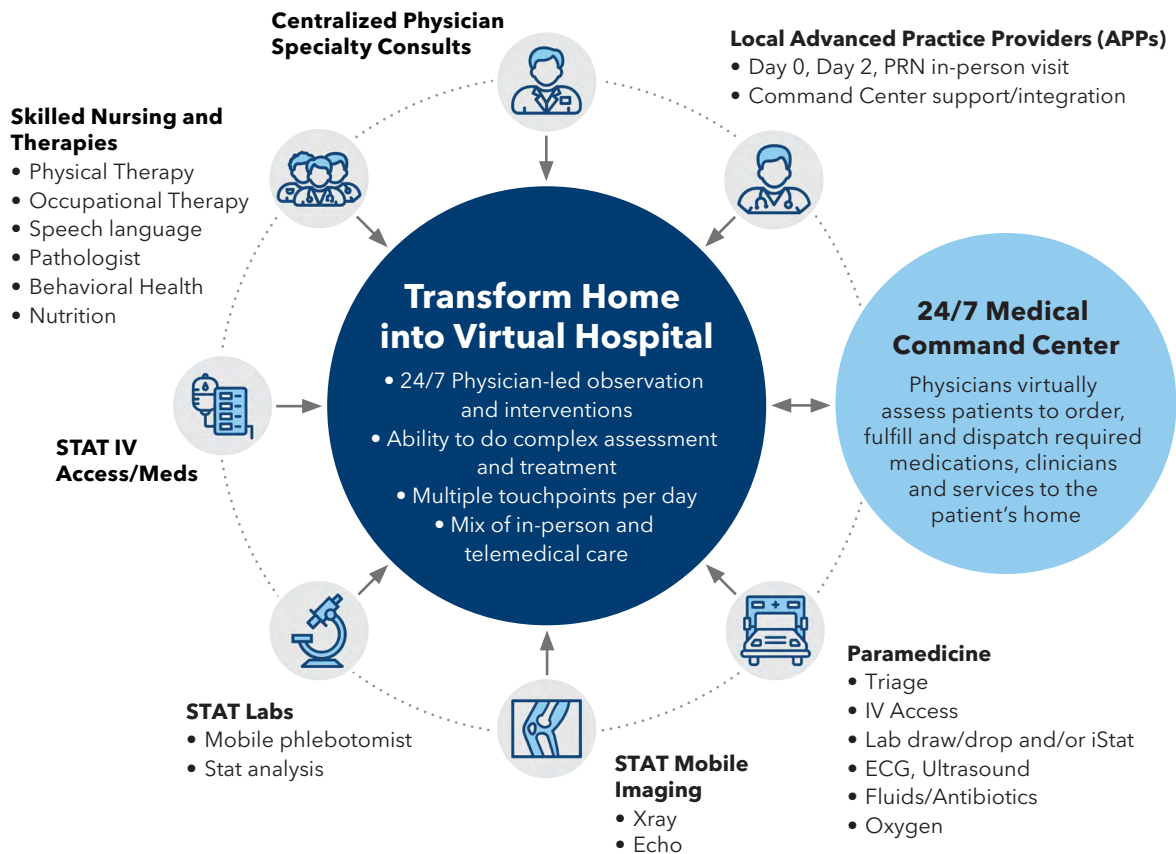
ACAH Command Center  
 (Available starting October 3rd)  
 206-508-0278  
 Toll-free 800-569-4399

Heather Paris, BSN  
 Program Manager ACAH  
 425-569-9699

[Heather.r.paris@kp.org](mailto:Heather.r.paris@kp.org)

Mona Kathuria, D.O., FAAHPM  
 Medical Director ACAH  
 206-584-4530

[Mona.p.kathuria@kp.org](mailto:Mona.p.kathuria@kp.org)



*continued from page 2*

## Olympia Medical Center is tops

### Best urgent care or walk-in facility

January 2022 marked the one-year anniversary of Olympia Medical Center's urgent care hours expanding to 24/7. These extended hours help reduce some of the traffic in the emergency room at the nearest hospital – just half a mile down the street.

The number of patients seen in the Olympia Medical Center Urgent Care department nearly doubled from an average

of 70 per day to more than 120 per day after the hours changed to 24/7. To prepare for more patients, Kaiser Permanente built 8 new exam rooms. We updated how we identify patients with minor illnesses or injuries so they can be seen and on their way more quickly. Patients with more serious concerns can stay up to 24 hours so that the team might turn their condition around and reduce the need for a hospital admission.

Learn more about our [awards and accolades](#), and the care options available at [Olympia Medical Center](#).

## Recent letters to providers

### Effective October 1, 2022

[Changes to medical necessity review criteria for percutaneous vertebral augmentation of vertebral compression fractures \(PDF\)](#)

Kaiser Foundation Health Plan of Washington and Kaiser Foundation Health Plan of Washington Options, Inc. (Kaiser Permanente) are revising the clinical review criteria for percutaneous vertebral augmentation of vertebral compression fractures.

[Changes to medical necessity review criteria for total knee arthroplasty \(PDF\)](#)

Kaiser Foundation Health Plan of Washington and Kaiser Foundation Health Plan of Washington Options, Inc. (Kaiser Permanente) is revising criteria for total knee arthroplasty for non-Medicare members.

[Revenue code billed without required procedure code \(PDF\)](#)

Kaiser Foundation Health Plan of Washington and Kaiser Foundation Health Plan of Washington Options, Inc. (Kaiser Permanente) will not reimburse revenue codes when submitted without the required procedure or HCPCS code.

### Effective November 1, 2022

[Changes to medical necessity review criteria for home pulse oximetry \(PDF\)](#)

Kaiser Foundation Health Plan of Washington and Kaiser Foundation Health Plan of Washington Options, Inc. (Kaiser Permanente) will no longer cover home pulse oximetry.

[Changes to medical necessity review criteria for lumbar spine fusion \(PDF\)](#)

Kaiser Foundation Health Plan of Washington and Kaiser Foundation Health Plan of Washington Options, Inc. (Kaiser Permanente) are revising the clinical review criteria for lumbar spine fusion.

[Changes to the code check tool for phototherapy \(PDF\)](#)

Kaiser Foundation Health Plan of Washington and Kaiser Foundation Health Plan of Washington Options, Inc. (Kaiser Permanente) are removing the excluded ICD-10 diagnosis codes from UVB/UVA therapy in the Dermatology Services clinical review criteria.

[Changes to medical necessity review criteria for minimally invasive lumbar decompression \(mild\) \(PDF\)](#)

Kaiser Foundation Health Plan of Washington and Kaiser Foundation Health Plan of Washington Options, Inc. (Kaiser Permanente) are revising the CPT codes in the Minimally Invasive Lumbar Decompression criteria.

### Effective December 1, 2022

[Revenue code billed without required procedure code \(PDF\)](#)

Kaiser Foundation Health Plan of Washington and Kaiser Foundation Health Plan of Washington Options, Inc. (Kaiser Permanente) will not separately reimburse for annual wellness visit and initial/periodic comprehensive preventive medicine evaluation visit when



billed for the same member on the same date of service by the same provider.

[Changes to medical necessity review criteria for Cervical Fusion \(PDF\)](#)

Kaiser Foundation Health Plan of Washington and Kaiser Foundation Health Plan of Washington Options, Inc. (Kaiser Permanente) will implement medical necessity criteria for Cervical Fusion.

[Changes to medical necessity review criteria for cochlear implant \(PDF\)](#)

Kaiser Foundation Health Plan of Washington and Kaiser Foundation Health Plan of Washington Options, Inc. (Kaiser Permanente) are updating the clinical review criteria for cochlear implants for non-Medicare members.

### Effective January 1, 2023

[New medical necessity review criteria for Advanced Care at Home \(PDF\)](#)

Kaiser Foundation Health Plan of Washington and Kaiser Foundation Health Plan of Washington Options, Inc. (Kaiser Permanente) is implementing Advanced Care at Home Criteria.



## Clinical Updates



Clinical guidelines are regularly reviewed and updated. Announcements about changes are posted on our provider website.

# Sexually Transmitted Infection Guideline updated

**THE KAISER PERMANENTE** Sexually Transmitted Infection (STI) Screening, Testing, and Treatment Guideline has been fully reviewed and updated. The updated guideline reflects the 2021 recommendations of the Centers for Disease Control and Prevention and – for syphilis infection – the 2022 recommendations of the Washington State Department of Health.

- **HIV screening** recommendations have been integrated into this guideline, and the standalone HIV Screening and PrEP Guideline has been retired.
- Due to its rising prevalence in Washington state, **syphilis** information has been expanded.
- Screening recommendations for **human papillomavirus (HPV), hepatitis B, and hepatitis C** have been added.
- Risk-based STI screening recommendations are now organized by **six populations** defined by the CDC (2021):
  - Pregnant persons
  - Men who have sex with women (cisgender)
  - Men who have sex with men (cisgender)
  - Transgender and gender-diverse persons
  - Persons with HIV

### Questions?

[John Dunn, MD, MPH](#), Medical Director, Clinical Knowledge & Implementation

[Colin Fields, MD](#), Quality Medical Program Director, HIV & PrEP Program

[Avra Cohen, MN, RN](#), Guideline Coordinator

## ARTICLES OF INTEREST

### Kaiser Permanente Washington Health Research Institute

- **Updated results from COVID-19 vaccine booster trial.** IDCRC study finds rapid decline in vaccine-boosted neutralizing antibodies against Omicron variant BA.5 [Read more](#)
- **Dementia risk screening tool shows promise.** In a new study, a tool to help discover undiagnosed dementia performed well in 2 separate health systems. [Read more](#)
- **New open data to help understand Alzheimer's.** Cell by cell, scientists are building a high-resolution map of brain changes in Alzheimer's disease. [Read more](#)



KPWHR affiliate researcher [C. Dirk Keene, MD, PhD](#), points out brain slices from an 83-year-old man who had died of Alzheimer's disease and donated his brain to research. Photo by Erik Dinnel, Allen Institute.

# Kaiser Permanente 2022 drug formularies

**THE KAISER PERMANENTE DRUG FORMULARIES** are the cornerstone of medication therapy, quality assurance, and cost containment. The formularies are developed by the Pharmacy and Therapeutics (P&T) Committee.

You can find [formulary decision highlights](#) from the most recent P&T Committee meetings on the Kaiser Permanente provider website.

## Medicare Part D Formulary updates

Notifications about drug removals from the Medicare Part D Formulary are now posted online on the [pharmacy page](#) of our provider website.

### Kaiser Permanente has 7 formularies

The table below outlines some of the major differences in these formularies. A closed formulary design describes a formulary in which preferred medications are covered and non-preferred (non-formulary) medications are generally not covered. Coverage of non-preferred medications is available through an exception process. An open formulary design describes a formulary in which both preferred and non-preferred medications are covered; however, preferred medications are available at a lower cost share for patients.

### How to view the Kaiser Permanente formularies

- On the [Kaiser Permanente provider website](#).
- On [ePocrates](#), register free of charge.

If you have questions about formulary status of a drug or prior authorization, please contact our Pharmacy Help Desk toll-free at 800-729-1174 or by fax toll-free at 866-510-1765.



MEDICARE	INDIVIDUAL & FAMILY / SMALL GROUP	LARGE GROUP AND FEDERAL EMPLOYEE HEALTH BENEFIT				
Closed Design	Open Design	Closed Design	Closed Design	Open Design	Open Design	Open Design
<p><b>Six tiers:</b></p> <ul style="list-style-type: none"> <li>• Preferred generic</li> <li>• Non-preferred generic</li> <li>• Preferred brand</li> <li>• Non-preferred brand</li> <li>• Specialty</li> <li>• Injectable Part D vaccines</li> </ul>	<p><b>Four tiers:</b></p> <ul style="list-style-type: none"> <li>• Preferred generic</li> <li>• Preferred brand</li> <li>• Specialty</li> <li>• Non-preferred generic &amp; brand</li> </ul> <p><b>PLUS:</b></p> <ul style="list-style-type: none"> <li>• Self-administered oncology</li> <li>• Medical benefit</li> </ul>	<p><b>Two tiers:</b></p> <ul style="list-style-type: none"> <li>• Preferred generic</li> <li>• Preferred brand</li> </ul>	<p><b>Three tiers:</b></p> <ul style="list-style-type: none"> <li>• Preferred generic</li> <li>• Preferred brand</li> <li>• Preferred specialty</li> </ul>	<p><b>Three tiers:</b></p> <ul style="list-style-type: none"> <li>• Preferred generic</li> <li>• Preferred brand</li> <li>• Non-preferred</li> </ul>	<p><b>Four tiers:</b></p> <ul style="list-style-type: none"> <li>• Preferred generic</li> <li>• Preferred brand</li> <li>• Non-preferred generic &amp; brand</li> <li>• Specialty</li> </ul>	<p><b>Five tiers:</b></p> <ul style="list-style-type: none"> <li>• Preferred generic</li> <li>• Preferred brand</li> <li>• Non-preferred generic &amp; brand</li> <li>• Preferred specialty</li> <li>• Non-preferred specialty</li> </ul>

### Save these dates



Kaiser Permanente Washington offers a variety of continuing medical education courses throughout the year, detailed on our [CME catalog page](#).

#### **OBESITY THROUGH THE LENS OF EVIDENCE-BASED MEDICINE**

September 20, 2022

#### **MENTAL HEALTH FOR PRIMARY CARE**

October 13, 2022

#### **ONLINE DECISION SUPPORT RESOURCES**

November 17, 2022

#### **GERIATRICS FOR PRIMARY CARE**

December 1, 2022

#### **HEMATOLOGY - ONCOLOGY FOR PRIMARY CARE**

January 26, 2023

#### **MEDICATION UPDATE 2023**

March 17, 2023

#### **Register**

Check out the [CME catalog page](#) to register and get course details.

#### **COVID-19 notice**

Please note courses will be presented as live virtual sessions using Microsoft Teams.

#### **Contact**

Christopher Scott  
[Christopher.J.Scott@kp.org](mailto:Christopher.J.Scott@kp.org)