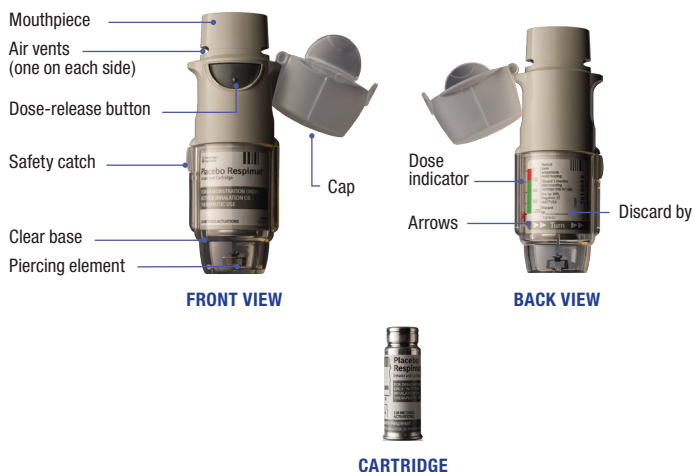


USING YOUR RESPIMAT INHALER

GET TO KNOW YOUR RESPIMAT INHALER



IMPORTANT TO REMEMBER

Before your RESPIMAT inhaler is used for the first time, the RESPIMAT cartridge must be inserted into the RESPIMAT inhaler and then primed. The instructions in this overview show you how to prepare and prime the inhaler for first-time use and how to use the inhaler for daily dosing.

Read the Instructions for Use included with your prescription before you start using RESPIMAT and each time you get a refill. There may be new information. This overview does not take the place of talking to your doctor about your medical condition or your treatment.

Do not turn the clear base before inserting the cartridge.

For oral inhalation only.

Do not spray RESPIMAT into your eyes.

TURN | OPEN | PRESS (T.O.P.)

A helpful way to remember how to use your inhaler for daily dosing is:

TURN the clear base until you hear a click.



OPEN the cap and close your lips around mouthpiece.



PRESS the dose-release button and inhale the mist.



RESPIMAT must be prepared and primed before first use.

QUESTIONS AND ANSWERS ABOUT YOUR INHALER

HOW SHOULD I STORE MY RESPIMAT INHALER?

- Store RESPIMAT at room temperature from 59°F to 86°F (15°C to 30°C)
- Do not freeze the RESPIMAT cartridge and inhaler

Keep your RESPIMAT cartridge and inhaler out of the reach of children.

HOW SHOULD I CARE FOR MY RESPIMAT INHALER?

Clean the mouthpiece, including the metal part inside the mouthpiece, with a damp cloth or tissue only, at least 1 time a week. Any minor discoloration in the mouthpiece does not affect RESPIMAT inhaler.

If the outside of your RESPIMAT inhaler gets dirty, wipe it with a damp cloth.

WHEN SHOULD I GET A NEW RESPIMAT INHALER?

Respimat is available in a 30-day supply. The dose indicator shows approximately how many puffs of medication are left. When the pointer enters the red area of the scale, there is enough medicine for 7 days (30-dose product).

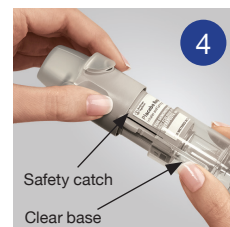
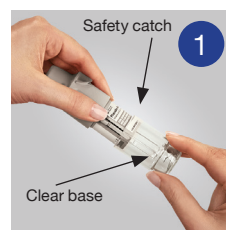
This is when you need to refill your prescription or ask your doctor if you need another prescription for RESPIMAT Inhalation Spray.

Once the dose indicator has reached the end of the scale, all puffs have been used and the RESPIMAT inhaler locks automatically. At this point, the base cannot be turned any further.

Throw away the RESPIMAT inhaler 3 months after insertion of cartridge into inhaler, even if all the medicine has not been used, or when the inhaler is locked, whichever comes first.

PREPARE FOR FIRST-TIME USE

1. With the cap closed, press the safety catch while pulling off the clear base.
Be careful not to touch the piercing element located inside the bottom of the clear base.
2. Write the *discard by* date on the label of the RESPIMAT inhaler.
The *discard by* date is 3 months from the date the cartridge is inserted into the inhaler.
3. Take the RESPIMAT cartridge out of the box.
Push the *narrow* end of the cartridge into the inhaler. The base of the cartridge will not sit flush with the inhaler. **About 1/8 of an inch will remain visible** when the cartridge is correctly inserted.
The cartridge can be pushed against a firm surface to ensure that it is correctly inserted.
Do not remove the cartridge once it has been inserted into the inhaler.
4. Put the clear base back into place.
Do not remove the clear base again.
The RESPIMAT inhaler should not be taken apart after the cartridge has been inserted and the clear base has been replaced.



PRIME FOR FIRST-TIME USE

The following steps are needed to fill the dosing system the first time it is used and will not affect the number of puffs available. After preparation and initial priming, the RESPIMAT inhaler will be able to deliver your medicine.

Proper priming of the inhaler is important to make sure the correct amount of medicine is delivered.

5. Hold the inhaler upright, with the cap closed, to avoid accidental release of dose.
Turn the clear base in the direction of the black arrows on the label until it clicks (half a turn).
6. Flip the cap until it snaps fully open.
7. Point the RESPIMAT inhaler toward the ground (away from your face).
Press the dose-release button. Close the cap.

Repeat steps 5, 6, and 7 until a spray is visible.

Once the spray is visible, you must repeat steps 5, 6, and 7 three more times to make sure the inhaler is ready for use.

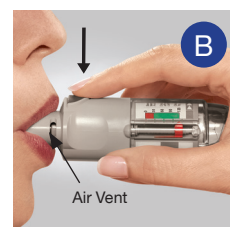
Your inhaler is now ready to use.

These steps will not affect the number of puffs available. After preparation and initial priming, the RESPIMAT inhaler will be able to deliver the full amount of medicine.



DAILY DOSING

- A. Hold the RESPIMAT inhaler upright, with the cap closed, to avoid accidental release of dose.
TURN the clear base in the direction of the black arrows on the label until it clicks (half a turn).
- B. Flip the cap until it snaps fully **OPEN**.
Breathe out slowly and fully, and then close your lips around the end of the mouthpiece without covering the air vents.
Point the RESPIMAT inhaler to the back of your throat.
While taking in a slow, deep breath through your mouth, **PRESS** the dose-release button and continue to breathe in slowly for as long as you can.
Hold your breath for 10 seconds or for as long as comfortable.



If your RESPIMAT inhaler has not been used for more than 3 days, spray one puff toward the ground to prepare the inhaler for use.

If your RESPIMAT inhaler has not been used for more than 21 days, repeat steps 5, 6, and 7 until a spray is visible. Then repeat steps 5, 6, and 7 three more times to prepare the inhaler for use.

Please call 1-800-542-6257 or (TTY) 1-800-459-9906 for further information.

A HELPFUL WAY TO REMEMBER THE STEPS FOR DAILY DOSING IS TO REMEMBER T.O.P.: **TURN, OPEN, PRESS.**

NEED MORE HELP?

See the solutions listed below to help you stay on track while prepping and using your inhaler.

WHAT IF:	REASON:	WHAT TO DO:
The base doesn't turn?	The RESPIMAT inhaler is already prepared and ready to use.	The RESPIMAT inhaler can be used as it is.
	The RESPIMAT inhaler is locked and all the medicine has been used.	Prepare and use a new RESPIMAT inhaler.
The dose-release button cannot be pressed?	The clear base has not been turned.	Turn the clear base until it clicks (half a turn).
The clear base springs back after it has been turned it and a small amount of moisture is released?	The clear base was not turned far enough.	Prepare the RESPIMAT inhaler for use by turning the clear base until it clicks (half a turn).
The clear base turns past the point where it clicks?	Either the dose-release button has been pressed, or the clear base has been turned too far.	With the cap closed, turn the clear base until it clicks (half a turn).

INFORMATION ABOUT RESPIMAT

- Use RESPIMAT exactly as your doctor tells you to use it
- Do not change your dose or how often you use RESPIMAT without talking with your doctor
- Do not use other inhaled medicines with RESPIMAT without talking to your doctor
- Tell your doctor about all of the medicines you take. RESPIMAT may affect the way some medicines work and some other medicines may affect the way RESPIMAT works
- The RESPIMAT inhaler has a slow-moving mist that helps you inhale the medicine
- Always use the new RESPIMAT inhaler that is provided with each new prescription. Only use the RESPIMAT inhaler to take your medicine. Do not use the RESPIMAT inhaler with other medicines